



Getting ready to start a project and don't know if you're conducting research or a quality improvement initiative?

Contact the Office of Innovation & Research. We're here to help!

We'll discuss with you your project plan, it's implementation, the data you will collect, what support services are needed, and any other details to help you determine if you are undertaking a quality improvement initiative or a research project and what approval stream you need to follow.

Is My Project Research or Quality? A few examples:

Research: Investigation to establish facts

Quality: Implementation of knowledge

Research: Contributes to generalizable knowledge

Quality: Evaluates a process or program to accepted standards

Research: Rigid protocol that will not change

Quality: Adaptive, iterative design

Research: Includes a subset of participants that meet specific criteria

Quality: Includes all involved in the process or program

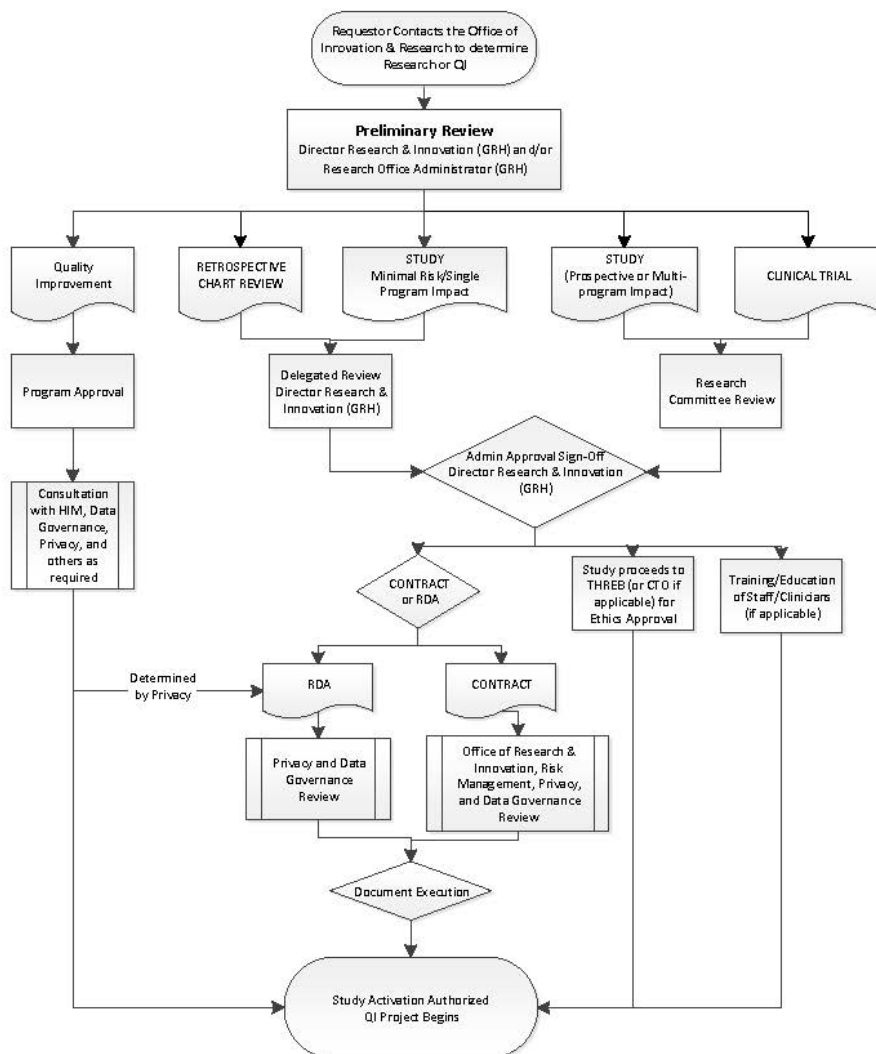
Research: Statistically evaluate results

Quality: Compare results to standards

Research: Answers a question

Quality: Improves a program, process or system

Approval Process



Document Development

Research Application:
THREB Application Part 1
THREB Application Part 2
THREB Application Part 3
Protocol

Quality Improvement
Protocol/Project Guide/Plan
Quality Improvement Charter

Research or QI, if applicable:
Information Letter
Consent
Survey Tool
Data Collection Tool
Data Sharing Agreement

Things to Consider:
Where will data be stored
Who will have access to the data
Will it be transferred outside of the hospital

Will I Need Help?
Network Access (e.g Cerner)
Access to medical records (e.g paper charts)
Reports from Decision Support