



Kidney Livestream

Thursday March 30, 2022

The Scope of Renal Disease in Ontario



Over 12,000 Ontarians with advanced chronic kidney disease require dialysis

An additional 10,000 Ontarians have chronic kidney disease requiring pre-dialysis care

There is no cure for kidney disease

Nearly 9,000 Ontarians are living with a functioning kidney transplant



Ontario Renal Network (ORN)

The Ontario Renal Network is Ontario's chronic kidney disease advisor. They are committed to facilitating a province wide effort to diminish the burden of chronic kidney disease (CKD) on Ontarians and the healthcare system.

- Ensure patients and their caregivers are partners in their care
- Identify priorities to guide our work at all levels
- Focus our efforts where they are most needed
- Advise the government on major initiatives and funding decisions
- Develop program-level strategic plans
- Bring together many partners within our complex health system



Ontario Renal Network (ORN)

GOALS & STRATEGIC OBJECTIVES



Person-centred

Partner with patients and caregivers to strengthen an inclusive kidney care system



Safe

Empower patients, caregivers and healthcare professionals to reduce avoidable harm



Equitable

Enable responsive and respectful kidney care for patients, regardless of who they are or where they live



Efficient

Improve the efficiency and coordination of the kidney care system



Effective

Deliver kidney care using best evidence



Timely

Improve patients' access to the care they need



Waterloo Wellington Regional Renal Program

GRH's Renal Program is a regional centre with chronic kidney disease (CKD) services for those living in Waterloo Region and Wellington County. It is one of the largest renal programs within a community hospital in Ontario

Our program consists of

- In-centre and satellite hemodialysis units
- Outpatient peritoneal dialysis
- Home hemodialysis
- Chronic kidney disease clinics



Our Approach to Chronic Kidney Disease

It is the goal of the ORN to provide care early in the disease process through a multi-care kidney clinic. Focus is put on early identification and delaying the progression of CKD

Our Renal Clinics support the management of medical care and education to prevent chronic kidney disease, organize patient assessments and referral for kidney transplantation (for eligible patients), and provide education and support for those who require dialysis



Renal Replacement Therapy

As the patient soon requires renal replacement therapy it is important to ensure that their choices for renal replacement therapy closely align with their overarching goals of care

Our Regional Renal Program provides the following renal replacement therapies:

- Acute hemodialysis
- Chronic hemodialysis (HD)
- Home hemodialysis (HHD)
- Peritoneal dialysis (PD)



Hemodialysis

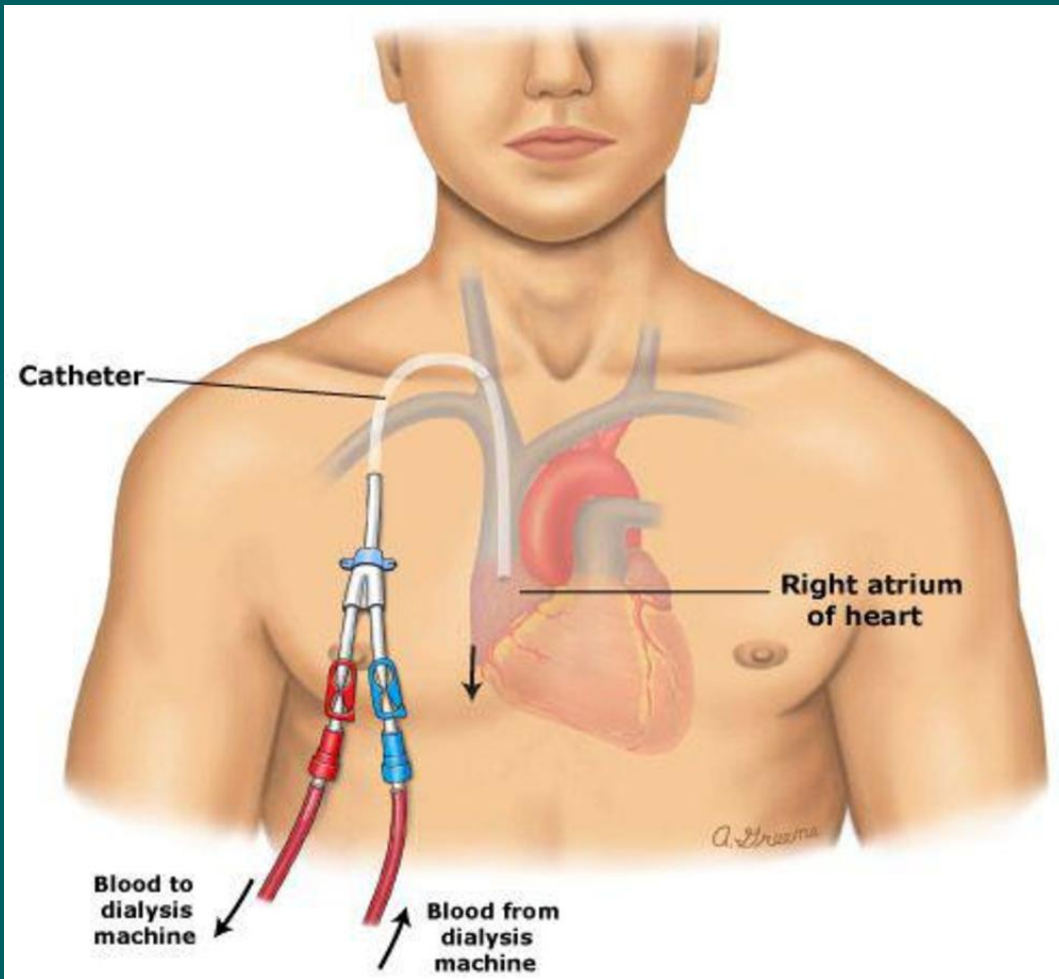
Hemodialysis uses a vascular access, such as a Central Venous Catheter (CVC) or Arteriovenous Fistula (AVF), to facilitate the cleaning of blood

Only a small volume of blood is outside of the body at one time (approximately 200-300mL).

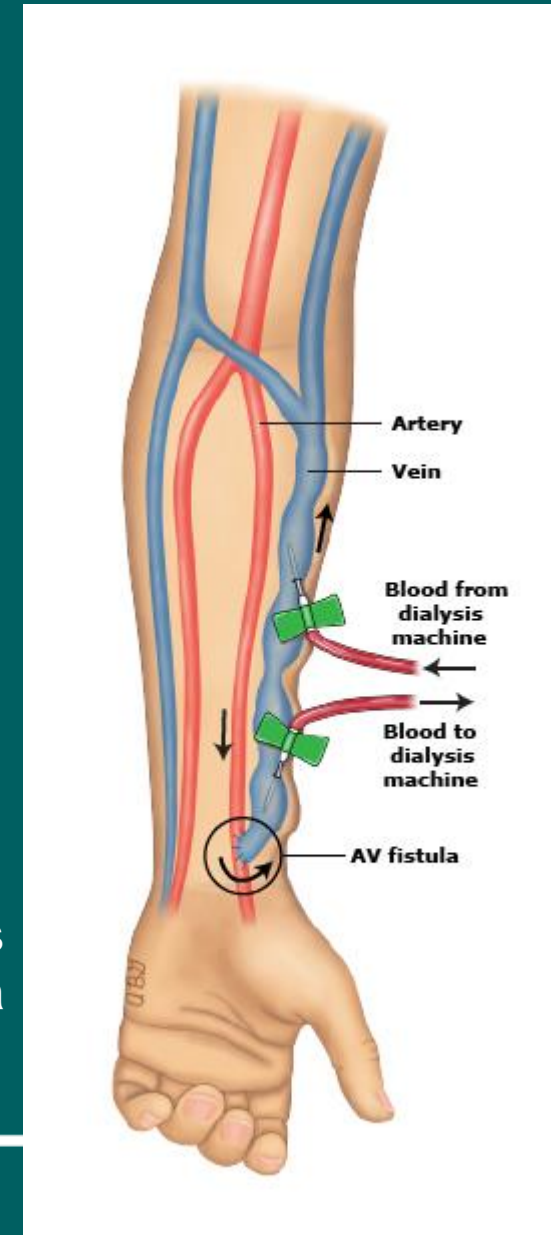
Treatments as an outpatient are most commonly three times per week and four hours per session



Hemodialysis Accesses



Central Venous Catheter



Arteriovenous Fistula

Hemodialysis - How Does It Work?

Hemodialysis relies upon the dialyzer (filter) to remove toxins, correct electrolytes and remove excess fluid

The dialyzer uses principles of osmosis and diffusion to move components across the membrane and out of the blood





Dialyzers



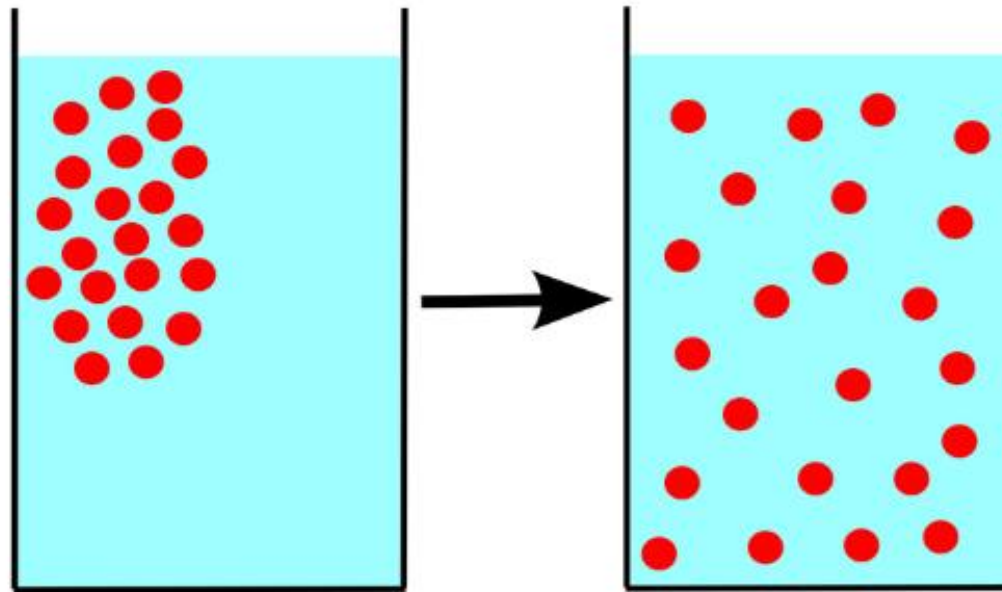
Dialysis
Machine



Diffusion

Movement of molecules
from high concentration
to low concentration

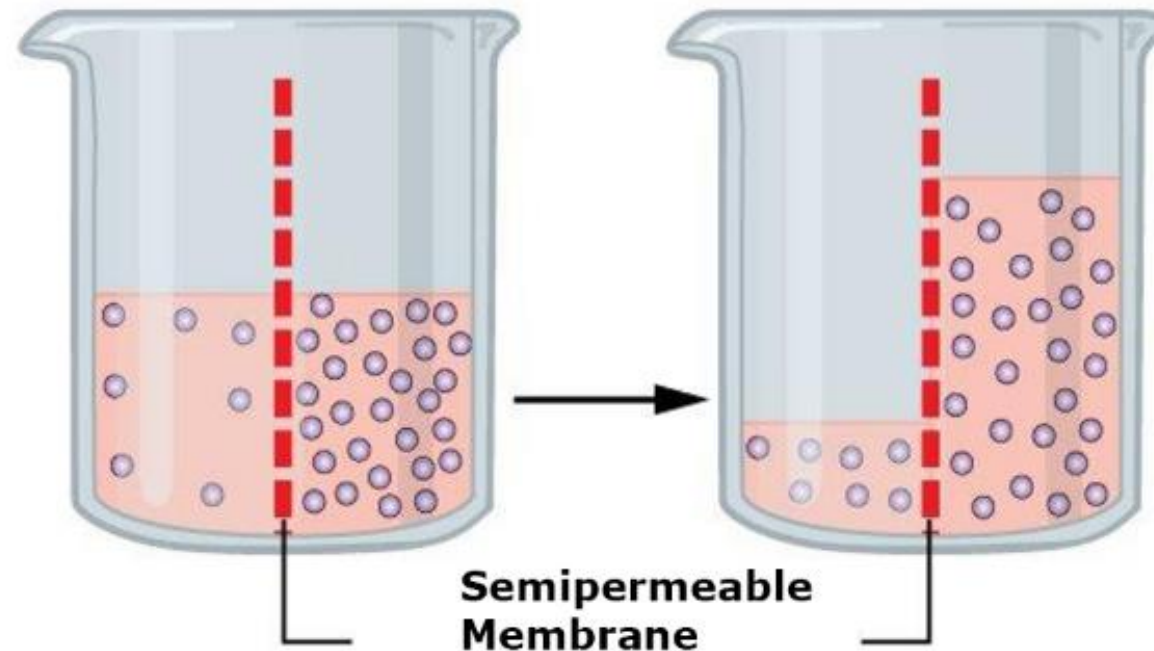
Both solute and solvent move



Osmosis

Movement of solvent (water)
across a semipermeable
membrane from high to
low solvent concentration

Only solvent moves



Nephrology Nursing

The nephrology nurse acts as a patient teacher and advocate, assisting the patient in seeking information, assuring the patient has the opportunity for informed consent for treatment decisions, and promoting the maximal level of patient-desired independence

The nephrology nurse functions as a coordinator of patient care collaborating with other care providers and health team members to provide required care as effectively as possible



Nephrology Certification

The Canadian Nurses' Association (CNA) allows nurses to become certified in a specialty care area such as nephrology

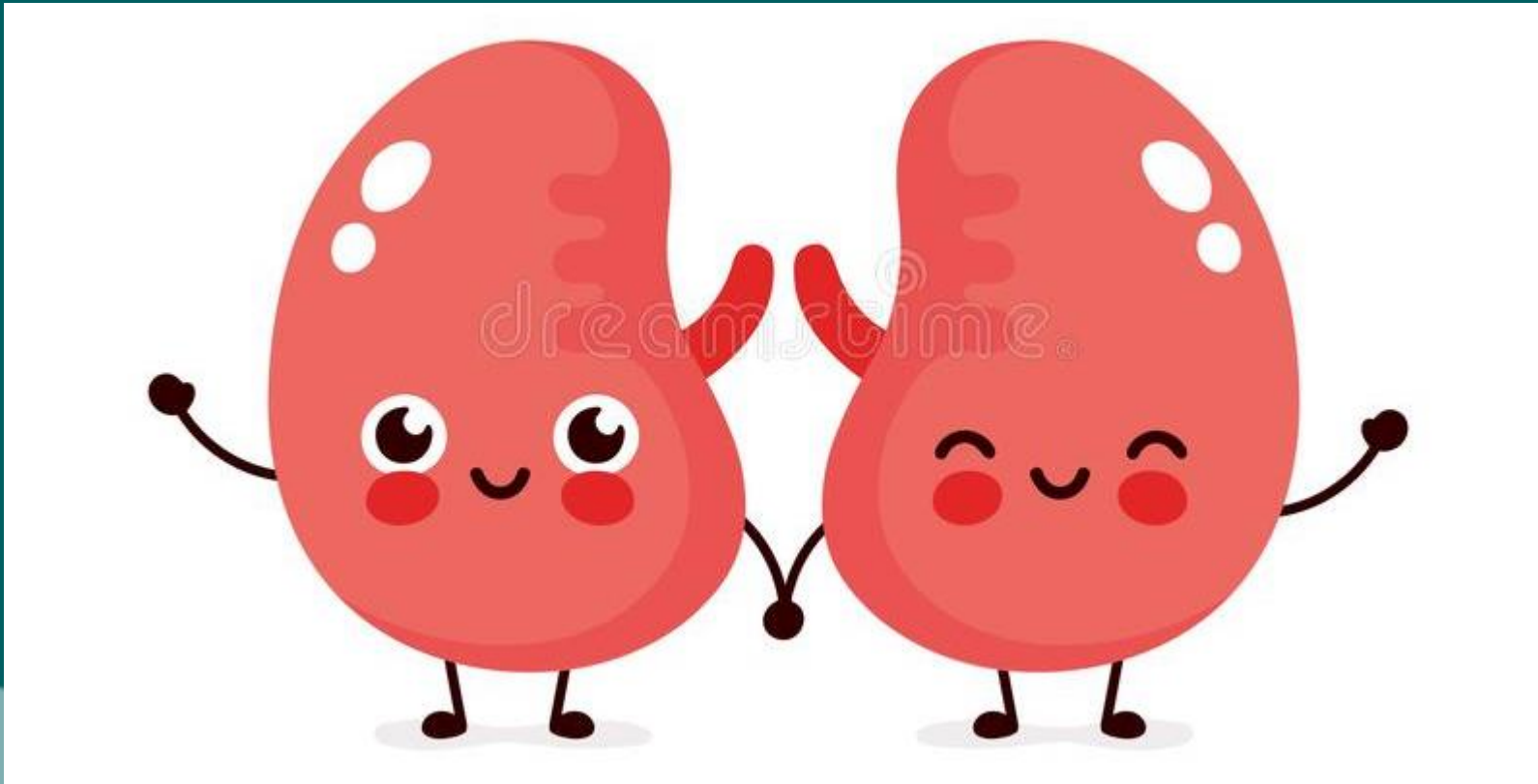


Certified nurses are:

- Recognized nationally for their practice excellence and commitment to lifelong learning
- Valued by employers, because their certification demonstrates specialized knowledge and brings many benefits to organizations
- Viewed as having enhanced professional credibility



Thank You!



Thank You for Attending!

Here are some additional resources:

Ontario Renal Network

<https://www.ontariorenalnetwork.ca/en>

Transplant Ambassador Program

<https://transplantambassadors.ca/>

Kidney Foundation of Canada

<https://kidney.ca/>

